

**Drugs Policy  
(including the Anti-Smoking Policy)**

<b>FREQUENCY OF REVIEW:</b>	<b>Every two years</b>
<b>RATIFICATION:</b>	<b>Spring Term 2021</b>
<b>RATIFIED BY:</b>	<b>OWS LGB</b>
<b>DATE OF NEXT REVIEW:</b>	<b>Spring Term 2024 unless there is a material change</b>
<b>AUTHOR:</b>	<b>Assistant Head Pastoral</b>

## Introduction

This Policy sets out the school's role in relation to all drug matters – both the content and organisation of drugs education and the management of drugs within school boundaries – in line with current DfE guidance (September 2012). It has been developed in consultation with the whole school community including pupils, parents, staff and Governors.

### Part One

**The Drugs Education Policy** has been developed with reference to DfE advice and guidelines: DfE and ACPO (Association of Chief Police Officers) drug advice for schools DfE-2012. The drugs education programme has been developed to be appropriate to the age, maturity and ability of the pupils, builds on the existing knowledge and understanding of the pupils, and takes into consideration their views. It is delivered as part of PSHE and Science education. It covers all drugs, including alcohol, tobacco, vaping, cannabis, volatile substances and Class A drugs.

### Part Two

**The Management of Drugs Incidents and Substance Misuse Policy** formalises and clarifies the way in which the school responds to drug related incidents and substance misuse. Central to this is the understanding that the unauthorised possession, use or supply of illegal and other unauthorised drugs (and alcohol) within school boundaries is unacceptable. Clear protocols and expectations relating to the management and reporting of drugs incidents within school are set out within the Policy.

The Policy seeks to support and encourage an underlying culture of intolerance to drugs within our society and the principle of "Say no to drugs". It is considered likely that drug and substance misuse will undermine a young person's health, safety, independence, opportunities and respect for the law and will also damage the integrity of the school community by exposing other pupils to temptation and to the risk of criminal proceedings.

In order to discourage drug and substance misuse, both within school boundaries and off site, the school places an emphasis on education and deterrence. As a result, a programme of education about drugs and substance misuse is delivered by school staff and occasionally qualified visitors.

It is recognised that drug and substance misuse is a criminal offence and if discovered on school premises will be dealt with severely. The investigation of such incidents is often complex and time consuming. In some cases, in order to deal with the matter appropriately and with as little disruption to both the individuals concerned and the school as a whole, the matter may be reported to the police and, where appropriate, advice will be taken from them. The methods of investigation and sanctions will be in keeping with the school's Behaviour Policy.

This Policy also provides advice and guidance to staff on the procedures to be followed when dealing with drug-related incidents (whatever the circumstances) in a fair, professional and proportionate manner. Staff have a specific responsibility to operate within the boundaries of this Policy and, when in a position of seniority, to ensure that all staff understand the standards of behaviour expected of them.

# Part One: The Drugs Education Policy

## 1. Introduction – why we need a Drugs Education Policy

The purpose of this policy is to:

- Clarify the legal requirements and responsibilities of the school
- Reinforce and safeguard the health and safety of pupils and others who use the school
- Clarify the school's approach to drugs for all staff, pupils, governors, parents/carers, external agencies and the wider community
- Enable staff to manage drugs on school premises, and any incidents that occur, with confidence and consistency, and in the best interests of those involved
- Provide a basis for evaluating the effectiveness of the school drug education programme and the management of incidents involving illegal and other unauthorised drugs
- Reinforce the role of the school in contributing to local and national strategies of drug misuse prevention.

## 2. Development and Dissemination Process

This Policy was written after initial consultation with pastoral staff, pupils and Governors. It will be communicated to all pupils, staff and visitors to OWS. A copy of the Policy will also be placed on the school website.

## 3. National Guidance

This Policy has been developed with reference to DfE advice and guidelines: DfE and ACPO drug advice for schools.

## 4. Relationship to other school policies

This Policy should be read in conjunction with other school policies including Anti-bullying, Child Protection, Behaviour & Attendance, Equality Statement & Accessibility Plan for Pupils, and Health & Safety.

## 5. Where and to whom the Policy applies

This Policy applies to all school staff, pupils, parents/carers, Governors and other partner agencies working with the school. This Policy applies to day and residential trips, and when schools are deemed to be in loco parentis.

## 6. Definitions and terminology

The term "drugs" refers to:

- All illegal drugs (those controlled by the Misuse of Drugs Act 1971)
- All legal drugs, including alcohol, tobacco, volatile substances (those giving off a gas or vapour which can be inhaled), ketamine, khat and alkyl nitrites (known as poppers)
- All over the counter and prescription medicines.

## 7. The school's stance towards drugs, health and the needs of pupils

Illegal and other unauthorised drugs are not acceptable in our school. The school is committed to ensuring as far as possible the health and safety of its members and will take action to safeguard their well-being. The first concern in managing drugs is therefore the health and safety of the school community and meeting the pastoral needs of pupils.

## 8. Our aims and objectives in drugs education

8.1. Aims: drugs education is a major component of drug prevention. Drug prevention aims to:

- minimise the number of young people engaging in drug use by explaining the possible dangers and consequences of such actions
- prevent or at least delay the onset of first use
- reduce the harm caused by drugs
- enable those who have concerns about drugs to seek advice and help.

8.2. Objectives: in order to achieve the aims of drug prevention, our drug education programme will:

- increase pupils' knowledge and understanding of the risks and consequences of legal and illegal drugs
- provide opportunities for pupils to explore their own and others' attitudes and values towards drugs and drug users
- support pupils to develop their personal and social skills so they feel able to communicate effectively, recognise choices, make decisions and access help when needed
- promote the benefits of a healthy lifestyle.

## **9. Staff with key responsibility for drugs;**

### **9.1. Headteacher**

The Headteacher will ensure that staff and parents are informed about this Drugs Policy, and that the Policy is implemented effectively. The Headteacher will also ensure that staff receive training, so that they can teach confidently and handle any difficult issues with sensitivity.

### **9.2. PSHE Coordinator**

The PSHE Coordinator will, where necessary, liaise with external agencies regarding the school drug education programme, and ensure that all adults who work with pupils are aware of the school Policy and work within this framework. The PSHE Coordinator will monitor the Policy on a day-to-day basis and report to Governors, when requested, on the effectiveness of the Policy.

### **9.3. School staff**

Drug prevention is seen as a whole school issue. Every member of staff and all school staff have a part to play in the implementation of the Policy.

### **9.4. Director of Finance and Business and the Site Manager**

The Director of Finance and Business and the site staff will undertake internal and external risk assessments as and when necessary. They will also ensure the site is free of drugs and drugs paraphernalia through routine checks, and will report any drugs paraphernalia to the local police, as appropriate.

### **9.5. Governors**

As part of their general responsibilities for the strategic direction of the school, Governors have a key role to play in the development and regular review of our school's policy on drugs. Governors will be kept informed as to the efficacy of present drug education provision and involved in any changes to existing provision/policy that may need to be made. Governors may contribute to any case conferences called, and will take part as necessary in any appeals against exclusions related to drugs incidents.

## **10. Staff support and training**

During induction to our school, staff will have time planned to gain a good understanding of all policies. Where necessary, teachers are provided with support as required to help their delivery of PSHE and extend their confidence in doing so. Training needs are identified for individual staff.

## **11. Involvement of parents/carers**

The school encourages the involvement of parents/carers by:

- informing parents about the school's Drugs Education Policy and practice
- answering any questions parents may have about the drugs education their children receive in school
- taking seriously any issue which parents raise with teachers or governors about this policy or the arrangements for drugs education in the school
- involving parents in any major reviews of the school policy
- informing parents about the best practice known with regard to drugs education so that the parents can support the key messages being given to children at school.

## **12. Confidentiality and handling disclosures**

Teachers, pupils and parents should be aware of the boundaries regarding confidentiality within the curriculum. Pupils must be made aware that confidentiality cannot be guaranteed and that they will be informed of all actions relating to their disclosure. Health professionals are bound by their own codes of conduct to maintain confidentiality. When working within a classroom they are also bound by the school's policies. Outside the classroom situation, they can exercise their own professional judgement maintaining the pupil's best interests at all times. Teachers cannot offer or guarantee absolute confidentiality, but should ensure pupils are informed of sources of confidential help, e.g. school nurse, counsellor, GP, advice services. If a pupil discloses information which is sensitive, not generally known, and which the pupil asks not to be passed on, the request will be honoured unless this is unavoidable in order for the teacher to fulfil their professional responsibilities.

## **13. The needs of pupils with special educational needs**

Care will be taken to ensure that the drug education curriculum meets the needs of individual pupils and takes into account their age, maturity, stage of development and personal and social influences. Appropriately differentiated materials and approaches will ensure that vulnerable pupils, including those with SEN, receive their entitlement to drug education. Pupils with SEN may be more vulnerable to situations involving risk. Teachers will focus more on developing pupils' confidence and skills to manage situations that require making decisions about drugs. Teachers will pay particular attention to enabling pupils to seek help and support when they need it.

## Part Two: The Management of Drugs Incidents and Substance Misuse Policy

### 14. Drug-related Incidents

14.1. Legislation defines 'Drug Misuse' as the non-medical use of drugs that are only intended for use in medical treatment, and the use of drugs that have no accepted medical purpose. Such drugs are prescribed and controlled under the Misuse of Drugs Act 1971. The Act does not cover other substances such as solvents, tobacco, e-cigarettes and "vape" pens and alcohol but legislation passed in 2016 includes what were previously known as "legal highs".

14.2. A substance-related incident is:

*'Any incident which is suspected to be substance-related by any responsible person affected, occurring within the confines and curtilage of the school premises or featuring within organised school activity, occurring outside the premises and usual school times.'* – the reasonable person test.

This includes any or all of the following:

- drugs or drugs paraphernalia found on school premises
- students in possession of unauthorised drugs
- students supplying unauthorised drugs
- students under the influence of drugs, or exhibiting signs of intoxication or illness
- disclosure of drug use
- information suggesting student(s) involved in substance misuse
- illegitimate sale/supply of drugs in the school vicinity.

But it will not include:

- the supply and management of prescribed drugs to students as approved by a medical practitioner and parents/guardian.

14.3. Any substance which is not illegal but may have an intoxicating, and/or stimulating and/or hallucinogenic effect will also be against school policy and will be dealt with in a similar fashion to those using illegal substances.

### 15. Roles and Responsibilities

15.1. The Headteacher takes overall responsibility for the Policy, its implementation and for liaison with the governing body, parents/guardians and outside agencies.

15.2. The Governing Body will oversee Policy implementation and effective operation within the school. They will be involved in drug education and drug-related incidents in the same manner as any other matters concerning the direction of the school.

15.3. The Headteacher will ensure all staff dealing with substance issues are trained and experienced. If appropriate, training will be given in:

- the nature and causes of alcohol and drug problems
- the effect of alcohol and drug misuse on safety and performance
- the assistance that can be provided both internally and externally.

### 16. Investigation

16.1. If an allegation of drug/substance misuse is raised, the Headteacher (or Deputy, in the Headteacher's absence) will decide upon the appropriate level and nature of investigation, having established the basic details and seriousness of the situation. It is the primary role of the police to investigate a criminal offence such as those encompassed under the Misuse of Drugs Act. This may run in conjunction with and in support of the school's discipline procedures.

16.2. It is good practice to isolate the person suspected to allow a better examination of the issue. This may include suspension to enable investigations to take place.

## 17. Sanctions

17.1. The school has an ongoing duty of care and will periodically review how best their duty should be exercised in respect of this Policy. Any response will balance the needs of the individual with those of the wider community and aim to provide students with the opportunity to learn from their mistakes and develop as individuals. Exclusion, be it fixed term or permanent, is the accepted response for proven violations of possessing and supplying drugs, and students should understand that they may be excluded if they are involved in drug use.

17.2. The nature of the drug involved and its classification as prescribed by the Misuse of Drugs Act and amendments is the significant factor in this decision. The attendant circumstances such as quantities involved, the number and vulnerability of others in the school population affected, impact on the community, repeat offending, and previous character of persons involved should be further considered as aggravating or mitigating features in any decision-making process.

17.3. Whilst the school's approach to drug and substance misuse must be flexible, for the protection of its staff and pupils it must also be firm. Save in exceptional circumstances, and on the basis that each case will be assessed individually, a student will be permanently excluded for taking drugs on the school site/purposefully being under the influence of drugs, possession, possession with intent to supply or supplying controlled drugs, even for a one-off or first time offence, and details may be passed to the police.

17.4. Whilst supply, possession or use of drugs will continue to be treated as an extremely serious disciplinary offence, following an incident where a student remains in or returns to school, opportunities will be provided for the student to learn from their mistakes and develop as individuals. Opportunities include:

- review with parents/carers after the incident
- further drugs education
- targeted support on a one to one basis.
- referral to an outside agency

## 18. Anonymous Incident Reporting

18.1. If staff notice a change in pattern of behaviour or any further indicators as detailed in Appendix 1, they should immediately report this to the Headteacher.

18.2. Verification will be sought on any anonymous information before positive action is considered.

## 19. Monitoring and Evaluation

19.1. Every effort will be made to review an incident after a formal school/police investigation. Appropriate records will be kept in each circumstance.

19.2. This Policy will be regularly reviewed to ensure relevance and content in accordance with need.

The Drugs Policy has been ratified by the Oldbury Wells School Local Governing Body

Signed \_\_\_\_\_

Dated \_\_\_\_\_

Chair of Oldbury Wells School Local Governing Body

Signed \_\_\_\_\_

Dated \_\_\_\_\_

Headteacher

## Appendix 1

### Signs of Possible Drug Misuse or Substance Misuse

Some of the main signs which may be associated with drug misuse are summarised in Tables 1, 2 and 3. The presence of these signs alone is not conclusive proof of drug or solvent misuse, many of them are part of normal adolescence.

Early detection of drug misuse is extremely important. If a young person's drug misuse is identified at an early stage, it is easier for action to be taken to prevent further misuse of drugs. Teachers, and non-teaching staff, should be alert to the warning signs which may indicate that a student is misusing drugs. Teachers need to be particularly vigilant when they are in charge of activities which take groups away from the school premises.

#### Table 1: Warning Signs in Individuals

- changes in attendance, and being unwilling to take part in school activities
- decline in performance in schoolwork
- unusual outbreaks of temper, marked swings of mood, restlessness or irritability
- reports from parents that more time is being spent away from home, possibly with new friends or with friends in older age groups
- excessive spending or borrowing of money
- stealing money or goods
- excessive tiredness without obvious cause
- no interest in physical appearance
- sores or rashes especially on the mouth or nose
- lack of appetite
- heavy use of scents, colognes etc. to disguise the smell of drugs
- wearing sunglasses at inappropriate times (to hide dilated or constricted pupils)

#### Table 2: Warning Signs in Groups

- regular absence on certain days
- keeping at a distance from other students, away from supervision points (eg groups who frequently gather near the gate of a school playground or sports field)
- being the subject of rumours about drug-taking
- talking to strangers on or near the premises
- stealing which appears to be the work of several individuals rather than one person (eg to shoplift solvents)
- use of drug takers' slang
- exchanging money or other objects in unusual circumstances
- associating briefly with one person who is much older and not normally part of the peer group

#### Table 3: Objects that may indicate Drug Misuse

- foil containers or cup shapes made from silver foil, discoloured by heat
- metal tins
- spoons discoloured by heat
- pill boxes
- plastic, cellophane or metal foil wrappers
- small plastic or glass phials or bottles
- twists of paper
- straws
- sugar lumps
- syringes and needles
- cigarette papers and lighters
- spent matches
- plastic bags, balloons with butane gas or other pressurised gas containers (solvent abuse)
- cardboard or other tubes (heroin)
- stamps, stickers, transfers or similar items
- shredded cigarettes, home-rolled cigarettes and pipes (cannabis)
- paper (about 2 inches square) folded to form an envelope (heroin wraps)



## Appendix 2

### Practical Guidance for Staff

1. All incidents involving illegal drugs, either inside or outside of school, must be reported to the Headteacher. Never assume it is a rumour or isolated incident. Any information may help to give a more accurate picture of substance misuse in the area and help to safeguard the health and safety of young people.
2. If a member of staff suspects that a student is intoxicated or under the influence of drugs they should seek First Aid/Medical Emergency help
3. While it is advisable to isolate the individual from other students, he or she must not be left alone. Do not shout, threaten them or initiate discussion about drug use. Talk quietly and calmly, especially if the student is distressed.

#### 4. Searches

##### *Personal searches*

When a person is suspected of concealing illegal or other unauthorised drugs, every effort will be made to persuade the person to hand over any drugs voluntarily, in the presence of a second witness. Where the individual refuses, the Headteacher or staff authorised by them has a statutory power to search the pupil or their possessions, without consent, where they have reasonable grounds for suspecting that the pupil may have drugs. The school will take all reasonable steps to follow the latest Government guidelines in conducting a search. After any search involving students, parents/carers will normally be contacted by the school, regardless of whether the result of the search is positive or negative.

##### *Searches of school property*

Staff may search school property, for example, students' lockers, if they believe drugs to be stored there. Prior consent will always be sought. Individuals will be made aware that if consent is refused the school may wish to proceed with a search. However, when consent is refused, the school will balance the likelihood that an offence has been committed against the risk of infringing the individual's privacy without just cause.

#### 5. Disposal

In taking temporary possession and disposing of suspected illegal drugs the school will:

- ensure that a second adult witness is present throughout
- seal the sample in a plastic bag and include details of the date and time of the seizure/find and witness present
- store it in a safe and secure location with limited access
- without delay notify the police, who will collect it, and then store or dispose of it in line with locally agreed protocols. The law does not require the school to divulge to the police the name of the student from whom the drugs were taken. Where a student is identified, the police will be required to follow set internal procedures
- inform parents/carers, unless this would jeopardise the safety of the student.

*Alcohol and tobacco:* These will be disposed of, and parents informed.

*Volatile substances:* Given the level of danger posed by volatile substances, the school will arrange for their safe disposal. Small amounts will be placed in a bin to which students do not have access.

*Needles/sharps:* Needles or syringes found on school premises will be removed with due regard to health and safety (e.g. by picking up with a litter picker or with thick leather gardening gloves or sweeping up using a dustpan and brush) and then placed in a "sharps" bin.

## Appendix 3

### The Anti-Smoking Policy

Smoking includes cigarettes, pipes, e-cigarettes and vape machines.

This Policy aims to:

- provide an environment where good health is promoted for all
- highlight to all who use Oldbury Wells School that it is a 'smoke free' environment
- enable the school to tackle smoking related issues, including use of e-cigarettes and 'vape' machines
- raise awareness of the dangers associated with exposure to tobacco smoke and reinforce the school's health education programme
- satisfy section 2(2)(e) of the Health and Safety at Work Act 1974, which places a duty on employers to provide a working environment for employees that is 'safe without risks to health and adequate as regards facilities and arrangements for their welfare at work'
- comply with the smoke free legislation under the Health Act 2006 which, from 1<sup>st</sup> July 2007, places a duty on 'any person who controls or is concerned in the management of smoke-free premises', ie the Headteacher, to ensure compulsory signage is displayed in the required places and smoking is prevented in all areas of the premises
- take account of the needs of those who are addicted to smoking and to offer an avenue of support for those who wish to stop.

#### School Site

- Oldbury Wells School Site is an entirely smoke free environment.
- This Policy applies to staff, students, parents, visitors and contractors when they are on the school site.
- Signage reminds all visitors of Oldbury Wells School's smoke free policy.
- Signs are prominently displayed around the school grounds reflecting the school's stance regarding smoking on site. Compulsory signage will be displayed as required by the Health and Safety at Work Act.
- All transport provided by the school is smoke free and will display the compulsory signage as required by the Health and Safety at Work Act. Smoking on school transport carries the sanctions as detailed on the following page.

#### School Buildings

- Smoking is not permitted in the school's buildings.

#### School Grounds

- Smoking is not permitted anywhere in the school grounds, and immediate vicinity of the school, at any time. This includes the frontages of the school, school gates and immediate roadside, car park, coach park and playing fields. This includes school events held outside normal school hours.
- Students are reminded they are not permitted in any of the school's 'out of bounds' areas (see attached maps).
- Organisations and clubs who use the school premises outside of school hours are expected to adhere to the school's Anti-Smoking Policy.

## Securing Compliance: Staff

- Staff and Governors must have a clear and detailed understanding of the damage that cigarette smoking and second hand smoking can do to health and also be aware of issues of addiction.
- Through the PSHEE and Science Curriculum and assemblies, we will ensure smoking-related topics are adequately incorporated into class teaching for each Key Stage and we will utilise all other opportunities.
- Staff are not permitted to smoke anywhere on the school site.
- Staff will not smoke in front of students during educational visits.
- Details of the NHS Anti-Smoking Service will be available to those members of staff who wish to stop smoking.
- All staff will be directed to this Policy and new staff will be alerted to the existence of the smoke free environment.
- Breaches of this Policy will be subject to the normal disciplinary procedures.
- Staff, parents and carers are expected to refrain from smoking on all school trips.

## Securing Compliance: Students

- Schools recognise a duty of care to those students who smoke and are committed to assisting them to break the habit with the support of appropriate external agencies and / or the Pastoral Support Teams. This may be done through youth workers, the school nurse or CHAT (Confidential Help and Advice for Teens).
- If a student is found smoking in school, or where school has jurisdiction, the following action will be taken.

## Disciplinary Procedures

- The school will follow consistent procedures to deter and re-educate students who smoke or use vape machines on the school site, and are in breach of our expectations.
- The school will also sanction students who bring the school into disrepute by smoking.
- The school will aim to inform parents of its disapproval of smoking and vaping in their school uniform to and from school, and will ensure that prospective parents are aware of the sanctions likely to be enforced.

## The Rules and Sanctions are as follows to any student

- **considered to be smoking/vaping,**
- **accompanying persons considered to be smoking in out of bounds areas**
- **are found in possession of a vape/vape liquid/cigarettes:**

At all stages:

- Students will be reminded of this policy.
- Letters will go home.
- Incidents are recorded on SIMS (the school's data system).
- Appropriate education and support is offered.

- Stage 1: 3 consecutive Lunchtime Detentions. \*During our current working conditions under covid measures this would be a 1 hour after school.
- Stage 2: SLG detention of 2 hours.
- Stage 3: Fixed term period of exclusion from school.  
Hopefully this is not needed. However, students who reach Stage 3 will be excluded from school and return on a parent/school contract agreeing to the student being directly supervised at all breaktimes and lunchtimes by a member of staff for as long as is deemed necessary by the Headteacher or a member of the Senior Leadership Group.

## **Parents**

**(The term 'parent', in relation to any child or young person, includes any person who has parental responsibility or care for the child or young person).**

- Parents will be reminded that the school site is a smoke free environment.
- Parents are not permitted to smoke anywhere on the school site, including the frontage to the school.
- Parents should not smoke at entrances and exits to the school site whilst collecting their children.
- Parents will be asked to refrain from smoking when assisting on any school trips and events.

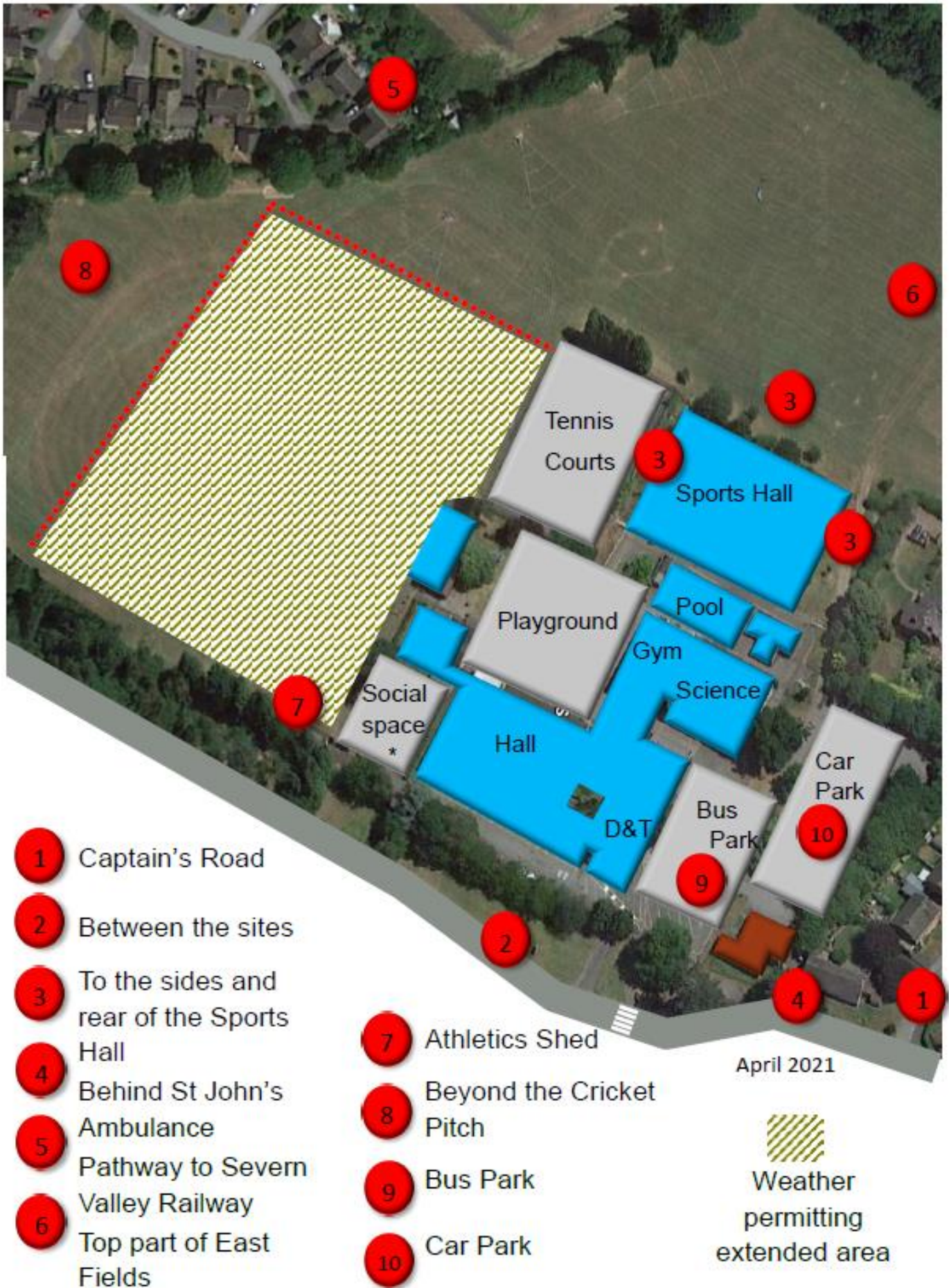
## **Contractors, Visitors and Other Users of the School Site**

- All contractors, visitors and users of the school site must be informed of the school's Anti-Smoking Policy on signing in at Reception and are not permitted to smoke anywhere on the school site.
- Adequate signage will act as a reminder.
- Contractors, visitors and users of the school site should not smoke at exits and entrances to the school or within the grounds.
- Smoking inside work vehicles on site is not permitted.
- Breaches of the school's Anti-Smoking Policy by contractors should be reported to the relevant company via the school's Director of Finance and Business or site staff.

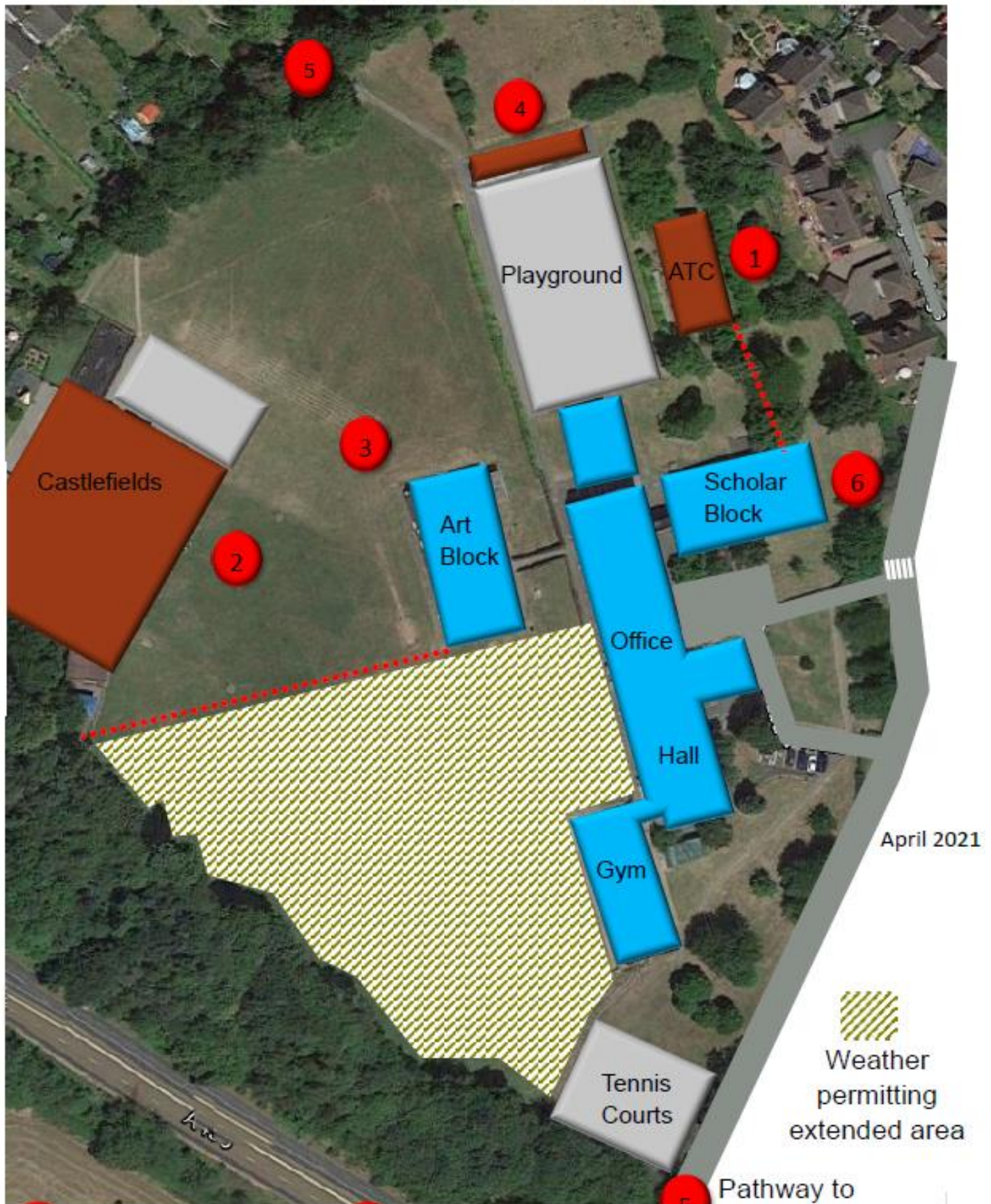
## **Monitoring, Evaluation and Review**

- This Policy has been devised in consultation with children/young people, staff, parents/carers and Governors.
- The Governors and Senior Leadership Group will ensure that all staff take responsibility for implementing and regularly monitoring students, staff and other adults using the school site. Overall responsibility for this Policy ultimately rests with the Headteacher.
- The Headteacher, Senior Leadership Group and Year Heads will review and monitor to ensure that the Science and PSHE curriculum is providing education on the dangers of smoking, preferably emphasising the benefits of not smoking.
- The school acknowledges that smoking can be an addiction and will ensure that adequate support will be made available to those who want to quit.
- The Governing Body will review this Policy and assess its implementation and effectiveness. The Policy will be promoted and implemented throughout the school.
- This Policy is available in the Policies section of the school's website.

# Out of Bounds Areas : EAST



# Out of Bounds Areas : WEST



- 1 Behind ATC Hut
- 2 Castlefields ground
- 3 Field
- 4 Bike sheds
- 5 Pathway to Highlands Road
- 6 Behind Scholar Block

## Appendix 4

### Useful Organisations

**Addaction** is one of the UK's largest specialist drug and alcohol treatment charities. As well as adult services, they provide services specifically tailored to the needs of young people and their parents. The Skills for Life project supports young people with drug misusing parents. Website: [www.addaction.org.uk](http://www.addaction.org.uk)

**ADFAM** offers information to families of drug and alcohol users and the website has a database of local family support services. Tel: 020 7553 7640 Email: [admin@adfam.org.uk](mailto:admin@adfam.org.uk) Website: [www.adfam.org.uk](http://www.adfam.org.uk)

**Alcohol Concern** works to reduce the incidence and costs of alcohol-related harm and to increase the range and quality of services available to people with alcohol-related problems Tel: 020 7264 0510. Email: [contact@alcoholconcern.org.uk](mailto:contact@alcoholconcern.org.uk) Website: [www.alcoholconcern.org.uk](http://www.alcoholconcern.org.uk)

**ASH (Action on Smoking and Health)** is a campaigning public health charity aiming to reduce the health problems caused by tobacco. Tel: 020 7739 5902 Email: [enquiries@ash.org.uk](mailto:enquiries@ash.org.uk) Website: [www.ash.org.uk](http://www.ash.org.uk)

**Children's Legal Centre** operates a free and confidential legal advice and information service covering all aspects of law and policy affecting children and young people. Tel: 01206 877910. Email: [clc@essex.ac.uk](mailto:clc@essex.ac.uk) Website: [www.childrenslegalcentre.com](http://www.childrenslegalcentre.com)

**Drinkaware** - An independent charity that promotes responsible drinking through innovative ways to challenge the national drinking culture, helping reduce alcohol misuse and minimise alcohol related harm. Tel: 020 7307 7450 Website: [www.drinkaware.co.uk](http://www.drinkaware.co.uk)

**Drinkline** - A free and confidential helpline for anyone who is concerned about their own or someone else's drinking. Tel: 0800 917 8282 (lines are open 24 hours a day)

**Drug Education Forum** – this website contains a number of useful papers and briefing sheets for use by practitioners: Website: [www.drugeducationforum.com](http://www.drugeducationforum.com)

**DrugScope** is a centre of expertise on illegal drugs, aiming to inform policy development and reduce drug-related risk. The website includes detailed drug information and access to the Information and Library Service. DrugScope also hosts the Drug Education Practitioners Forum. Tel: 020 7520 7550 Email: [info@drugscope.org.uk](mailto:info@drugscope.org.uk) Website: [www.drugscope.org.uk](http://www.drugscope.org.uk)

**FRANK** is the national drugs awareness campaign aiming to raise awareness amongst young people of the risks of illegal drugs and to provide information and advice. It also provides support to parents / carers, helping to give them the skills and confidence to communicate with their children about drugs. 24 Hour Helpline: 0800 776600. Email: [frank@talktofrank.com](mailto:frank@talktofrank.com) Website: [www.talktofrank.com](http://www.talktofrank.com)

Re-Solv (Society for the Prevention of Solvent and Volatile Substance Abuse) is a national charity providing information for teachers, other professionals, parents and young peoples. Telephone: 01785 817885 Information line: 01785 810762 Email: [information@re-solv.org](mailto:information@re-solv.org) Website: [www.re-solv.org](http://www.re-solv.org)